

测试报告 (SVHC)

No. CANEC1500341304

日期: 2015年01月16日 第1页,共33页

深圳市固得沃克电子有限公司
深圳市福田区深南中路世纪汇都会轩2102室

以下测试之样品是由申请者所提供及确认: 整流二极管

SGS工作编号: CP15-000145 - SZ
型号: DO-41
客户参考信息: 请见REMARK 1
料号: 请见REMARK 2
样品接收日期: 2015年01月08日
测试周期: 2015年01月08日 - 2015年01月16日
测试要求: 根据客户要求,
(i) 基于欧洲化学品管理署截止2014年12月17日公布的供授权审议的高关注物质候选清单(根据欧盟第1907/2006号REACH法规), 对161种高关注物质(SVHC)进行筛分测试。
测试结果: 请参见下一页

总结:

根据具体的测试范围和分析技术, 委托样品中测试的高关注物质浓度都 $\leq 0.1\%$ 。	通过
---	----

通标标准技术服务有限公司
授权签名

Zm guan 关正孟
批准签署人

备注: 本报告是编号为CANEC1500341303报告的中文版本



This document is issued by the Company subject to its General Conditions of Service printed overleaf, available on request or accessible at <http://www.sgs.com/en/Terms-and-Conditions.aspx> and, for electronic format documents, subject to Terms and Conditions for Electronic Documents at <http://www.sgs.com/en/Terms-and-Conditions/Terms-e-Document.aspx>. Attention is drawn to the limitation of liability, indemnification and jurisdiction issues defined therein. Any holder of this document is advised that information contained hereon reflects the Company's findings at the time of its intervention only and within the limits of Client's instructions, if any. The Company's sole responsibility is to its Client and this document does not exonerate parties to a transaction from exercising all their rights and obligations under the transaction documents. This document cannot be reproduced except in full, without prior written approval of the Company. Any unauthorized alteration, forgery or falsification of the content or appearance of this document is unlawful and offenders may be prosecuted to the fullest extent of the law. Unless otherwise stated the results shown in this test report refer only to the sample(s) tested.
Attention: To check the authenticity of testing /inspection report & certificate, please contact us at telephone: (86-755) 8307 1443, or email: CN.Doccheck@sgs.com

198 Kezhu Road, Sciencetech Park Guangzhou Economic & Technology Development District, Guangzhou, China 510663 t (86-20) 82155555 f (86-20) 82075113 www.sgsgroup.com.cn
中国·广州·经济技术开发区科学城科珠路198号 邮编: 510663 t (86-20) 82155555 f (86-20) 82075113 e sgs.china@sgs.com

测试报告 (SVHC)

No. CANEC1500341304

日期: 2015年01月16日 第2页,共33页

备注:

- (1) 本报告所涉及的关于特定高关注物质的化学分析是根据欧洲化学品管理署发布的下列文件, 利用现有的分析技术完成的。

<http://echa.europa.eu/web/guest/candidate-list-table>

这些文件清单由欧洲化学品管理署评估, 将来可能会有变化。

- (2) 关于物品:

根据欧盟第1907/2006 (EC) 号法规, 如果满足以下两个条件, 如果物质符合第57条中的标准并根据第59条第一款被确定, 物品的任何欧洲制造商或进口商应根据第7条第4款向欧盟化学品管理署进行通报: (a) 候选清单中的物质在物品中的总含量超过1吨/年/生产商或进口商; (b) 候选清单中的物质在物品中的总含量以质量分数计超过0.1% 的浓度。

欧盟第1907/2006 (EC) 号法规第33条规定, 含有满足第57条中的标准并根据第59条第一款被确定且质量分数大于0.1%的物质的物品的所有供应商应向物品接受者提供其可获取的充足信息, 以使物品使用安全, 这些信息至少包括含有的候选清单中物质的名称。

SGS采用ECHA对物品中SVHC的解释, 除非另有说明。详细的解释请见下列网址:

http://webstage.contribute.sgs.net/corpreach/documents/SGS-CTS_SVHC-paper-EN-11.pdf

- (3) 关于材料:

报告中的测试结果是基于测试样品。如样品是均一材质, 当其构成成品时, 此结果不能代表成品中的SVHC浓度。如样品为均一材质等比例合测, 这些材质也可能来自不同的物品。

如果样品是一种物质或混合物, 并且直接出口到欧盟, 客户有责任遵守欧盟第1907/2006号REACH法规第31条供应链信息传递的义务和附件十四中的授权高关注物质授权的责任。

- (4) 关于物质和配制品:

如果样品中高关注物质的浓度超过0.1% (w/w) 和/或欧盟第1272/2008号CLP法规和欧盟委员会条例第790/2009号中设定的特殊浓度限值, 建议客户根据欧盟第1907/2006号REACH法规对有关高关注物质准备安全数据表(SDS)以符合供应链传递信息的义务, 如:

- 根据欧盟第1272/2008号CLP法规被列为有害物质。

- 根据危险混合物指令1999/45/EC或欧盟第1272/2008号CLP法规被列为危险混合物, 而其浓度大于或等于危险混合物指令1999/45/EC第3条(3)中规定的限制数值或欧盟第1272/2008号CLP法规附件六第3部分列出的较低值;或

- 根据危险混合物指令1999/45/EC并未列为危险混合物, 但包含:

(a) 对人类健康或环境有害的物质, 而在固体或液体混合物 (即非气体混合物) 中其浓度 $\geq 1\%$ (w/w) 或在气体混合物中占体积 $\geq 0.2\%$, 或

(b) PBT或vPvB物质, 在固体或液体混合物 (即非气体混合物) 中浓度 $\geq 0.1\%$ (w/w), 或

(c) 授权审议的高关注物质候选清单上的物质 (除上述以外的原因) 在非气体混合物中的浓度 $\geq 0.1\%$ (w/w), 或



This document is issued by the Company subject to its General Conditions of Service printed overleaf, available on request or accessible at <http://www.sgs.com/en/Terms-and-Conditions.aspx> and, for electronic format documents, subject to Terms and Conditions for Electronic Documents at <http://www.sgs.com/en/Terms-and-Conditions/Terms-e-Documents.aspx>. Attention is drawn to the limitation of liability, indemnification and jurisdiction issues defined therein. Any holder of this document is advised that information contained hereon reflects the Company's findings at the time of its intervention only and within the limits of Client's instructions, if any. The Company's sole responsibility is to its Client and this document does not exonerate parties to a transaction from exercising all their rights and obligations under the transaction documents. This document cannot be reproduced except in full, without prior written approval of the Company. Any unauthorized alteration, forgery or falsification of the content or appearance of this document is unlawful and offenders may be prosecuted to the fullest extent of the law. Unless otherwise stated the results shown in this test report refer only to the sample(s) tested.

Attention: To check the authenticity of testing / inspection report & certificate, please contact us at telephone: (86-755) 8307 1443, or email: CN.Doccheck@sgs.com

198 Kezhu Road, Sciencetech Park Guangzhou Economic & Technology Development District, Guangzhou, China 510663 t (86-20) 82155555 f (86-20) 82075113 www.sgs.com.cn

中国·广州·经济技术开发区科学城科珠路198号 邮编: 510663 t (86-20) 82155555 f (86-20) 82075113 e sgs.china@sgs.com

测试报告 (SVHC)

No. CANEC1500341304

日期: 2015年01月16日 第3页,共33页

(d) 设有欧洲范围内工作场所接触限值的物质。

(5) 如果样品中SVHC的测试结果超过报告限, 建议客户进一步定量分析检测含有SVHC的组分并且得到SVHC物质的准确浓度。

测试样品:

测试样品描述:

样品编号	SGS样品ID	描述
SN1	CAN15-003413.003	"整流二极管"

测试方法:

SGS内部方法- GZTC CHEM-TOP-092-01, GZTC CHEM-TOP-092-02, 采用ICP-OES、UV-VIS、GC-MS、HPLC-DAD/MS和比色法分析。



This document is issued by the Company subject to its General Conditions of Service printed overleaf, available on request or accessible at <http://www.sgs.com/en/Terms-and-Conditions.aspx> and, for electronic format documents, subject to Terms and Conditions for Electronic Documents at <http://www.sgs.com/en/Terms-and-Conditions/Terms-e-Documents.aspx>. Attention is drawn to the limitation of liability, indemnification and jurisdiction issues defined therein. Any holder of this document is advised that information contained hereon reflects the Company's findings at the time of its intervention only and within the limits of Client's instructions, if any. The Company's sole responsibility is to its Client and this document does not exonerate parties to a transaction from exercising all their rights and obligations under the transaction documents. This document cannot be reproduced except in full, without prior written approval of the Company. Any unauthorized alteration, forgery or falsification of the content or appearance of this document is unlawful and offenders may be prosecuted to the fullest extent of the law. Unless otherwise stated the results shown in this test report refer only to the sample(s) tested.

Attention: To check the authenticity of testing /inspection report & certificate, please contact us at telephone: (86-755) 8307 1443, or email: CN.Doccheck@sgs.com

SGS Standards Technical Services Co., Ltd.
Guangzhou Chemical Laboratory

198 Kezhu Road, Sciencetech Park Guangzhou Economic & Technology Development District, Guangzhou, China 510663 t (86-20) 82155555 f (86-20) 82075113 www.sgsgroup.com.cn
中国·广州·经济技术开发区科学城科珠路198号 邮编: 510663 t (86-20) 82155555 f (86-20) 82075113 e sgs.china@sgs.com

测试报告 (SVHC)

No. CANEC1500341304

日期: 2015年01月16日 第4页,共33页

测试结果: (SVHC候选清单中的高关注物质)

批次	物质名称	CAS No.	003 浓度 (%)	RL (%)
VIII	氨基氰铅盐*	20837-86-9	NA^	0.005
VIII	硝酸铅*	10099-74-8	NA^	0.005
VIII	一氧化铅*	1317-36-8	NA^	0.005
VIII	碱式硫酸铅*	12036-76-9	NA^	0.005
VIII	四氧化三铅*	1314-41-6	NA^	0.005
VIII	铅铋黄*	8012-00-8	NA^	0.005
VIII	二碱式亚硫酸铅*	62229-08-7	NA^	0.005
VIII	硫酸三氧化四铅*	12202-17-4	NA^	0.005
VIII	碱式碳酸铅*	1319-46-6	NA^	0.005
X	乙酸铅*	301-04-2	NA^	0.005
-	其余测试的候选清单中的SVHC	-	ND	-

注释:

1. 上表仅显示检出的SVHC, 低于RL的SVHC没有列出。所有测试的SVHC请参见附录。
2. RL = 报告极限值, 所有RL是基于均一材质的测试。ND = 未检出(<RL), ND针对SVHC物质。
3. * 测试结果是由选定的元素或标记物的结果并基于最坏的情况计算得出。详细信息请参见SGS REACH网站: www.reach.sgs.com/substance-of-very-high-concern-analysis-information-page.htm
4. RL = 0.005% 是针对元素(例如钴、砷、铅、铬(VI)、铝、锆、硼、锑、锌、铋、钛、钡和镉), 除了钨的RL= 0.0005%, 硼的RL= 0.0025%(仅对四氟硼酸铅)。
5. 硼化合物的结果由ICP-OES测试的水提取的硼元素结果换算得出。
6. Δ 六溴环十二烷(HBCDD) 的非对映异构体α-HBCDD、β-HBCDD、γ-HBCDD的CAS NO 分别为134237-50-6、134237-51-7、134237-52-8。
7. ☆ 甲基六氢邻苯二甲酸酐, 4-甲基六氢邻苯二甲酸酐, 1-甲基六氢邻苯二甲酸酐, 3-甲基六氢邻苯二甲酸酐的CAS No: 25550-51-0, 19438-60-9, 48122-14-1, 57110-29-9; 及其EC No: 247-094-1, 243-072-0, 256-356-4, 260-566-1。
8. § 只有当物质包含米氏酮(CAS No.: 90-94-8)或米氏碱(CAS No.: 101-61-1)的浓度≥ 0.1%(w / w)的情况下, 该物质才被提议定为SVHC。
9. NA^ = 基于对检出的特定元素的验证及客户提供的信息, 此元素以此SVHC形式存在的可能性极小, 尽管不能完全排除其存在可能。此样品中的特定元素应该来源于其它化合物。



This document is issued by the Company subject to its General Conditions of Service printed overleaf, available on request or accessible at <http://www.sgs.com/en/Terms-and-Conditions.aspx> and, for electronic format documents, subject to Terms and Conditions for Electronic Documents at <http://www.sgs.com/en/Terms-and-Conditions/Terms-e-Documents.aspx>. Attention is drawn to the limitation of liability, indemnification and jurisdiction issues defined therein. Any holder of this document is advised that information contained hereon reflects the Company's findings at the time of its intervention only and within the limits of Client's instructions, if any. The Company's sole responsibility is to its Client and this document does not exonerate parties to a transaction from exercising all their rights and obligations under the transaction documents. This document cannot be reproduced except in full, without prior written approval of the Company. Any unauthorized alteration, forgery or falsification of the content or appearance of this document is unlawful and offenders may be prosecuted to the fullest extent of the law. Unless otherwise stated the results shown in this test report refer only to the sample(s) tested.

Attention: To check the authenticity of testing / inspection report & certificate, please contact us at telephone: (86-755) 8307 1443, or email: CN.Doccheck@sgs.com

198 Kezhu Road, Sciencetech Park Guangzhou Economic & Technology Development District, Guangzhou, China 510663 t (86-20) 82155555 f (86-20) 82075113 www.sgsgroup.com.cn
中国·广州·经济技术开发区科学城科珠路198号 邮编: 510663 t (86-20) 82155555 f (86-20) 82075113 e sgs.china@sgs.com

测试报告
(SVHC)

No. CANEC1500341304

日期: 2015年01月16日 第5页,共33页

附录

所有测试的SVHC:

批次	序号	物质名称	CAS No.	RL (%)
I	1	4,4'-二氨基二苯甲烷(MDA)	101-77-9	0.050
I	2	2,4,6-三硝基-5-叔丁基间二甲苯(二甲苯麝香)	81-15-2	0.050
I	3	C10-13 氯代烃(短链氯化石蜡)	85535-84-8	0.050
I	4	蒽	120-12-7	0.050
I	5	邻苯二甲酸丁苄酯(BBP)	85-68-7	0.050
I	6	邻苯二甲酸二(2-乙基己基)酯(DEHP)	117-81-7	0.050
I	7	氧化双三丁基锡(TBTO)	56-35-9	0.050
I	8	二氯化钴*	7646-79-9	0.005
I	9	五氧化二砷*	1303-28-2	0.005
I	10	三氧化二砷*	1327-53-3	0.005
I	11	邻苯二甲酸二丁酯(DBP)	84-74-2	0.050
I	12	六溴环十二烷(HBCDD) 及其非对映异构体(α -HBCDD, β -HBCDD, γ -HBCDD) Δ	25637-99-4, 3194- 55-6	0.050
I	13	砷酸氢铅*	7784-40-9	0.005
I	14	重铬酸钠*	7789-12-0, 10588-01-9	0.005
I	15	三乙基砷酸酯*	15606-95-8	0.005
II	16	2,4-二硝基甲苯	121-14-2	0.050
II	17	丙烯酰胺	79-06-1	0.050
II	18	蒽油*	90640-80-5	0.050
II	19	蒽油, 蒽糊*	90640-81-6	0.050
II	20	蒽油, 蒽糊, 蒽馏分*	91995-15-2	0.050



This document is issued by the Company subject to its General Conditions of Service printed overleaf, available on request or accessible at <http://www.sgs.com/en/Terms-and-Conditions.aspx> and, for electronic format documents, subject to Terms and Conditions for Electronic Documents at <http://www.sgs.com/en/Terms-and-Conditions/Terms-e-Documents.aspx>. Attention is drawn to the limitation of liability, indemnification and jurisdiction issues defined therein. Any holder of this document is advised that information contained hereon reflects the Company's findings at the time of its intervention only and within the limits of Client's instructions, if any. The Company's sole responsibility is to its Client and this document does not exonerate parties to a transaction from exercising all their rights and obligations under the transaction documents. This document cannot be reproduced except in full, without prior written approval of the Company. Any unauthorized alteration, forgery or falsification of the content or appearance of this document is unlawful and offenders may be prosecuted to the fullest extent of the law. Unless otherwise stated the results shown in this test report refer only to the sample(s) tested.

Attention: To check the authenticity of testing /inspection report & certificate, please contact us at telephone: (86-755) 8307 1443, or email: CN.Doccheck@sgs.com

198 Kezhu Road, Sciencetech Park Guangzhou Economic & Technology Development District, Guangzhou, China 510663 t (86-20) 82155555 f (86-20) 82075113 www.sgs.com.cn
中国·广州·经济技术开发区科学城科珠路198号 邮编: 510663 t (86-20) 82155555 f (86-20) 82075113 e sgs.china@sgs.com

测试报告
(SVHC)

No. CANEC1500341304

日期: 2015年01月16日 第6页,共33页

附录

所有测试的SVHC:

批次	序号	物质名称	CAS No.	RL (%)
II	21	葱油, 葱糊, 轻油*	91995-17-4	0.050
II	22	葱油, 含葱量少*	90640-82-7	0.050
II	23	邻苯二甲酸二异丁酯	84-69-5	0.050
II	24	铬酸铅*	7758-97-6	0.005
II	25	钼铬红(C.I.颜料红104)*	12656-85-8	0.005
II	26	铅铬黄(C.I.颜料黄34)*	1344-37-2	0.005
II	27	沥青, 煤焦油, 高温*	65996-93-2	0.050
II	28	磷酸三(2-氯乙基)酯	115-96-8	0.050
III	29	重铬酸铵*	7789-09-5	0.005
III	30	硼酸*	10043-35-3, 11113-50-1	0.005
III	31	无水四硼酸钠*	1303-96-4, 1330-43-4, 12179-04-3	0.005
III	32	铬酸钾*	7789-00-6	0.005
III	33	重铬酸钾*	7778-50-9	0.005
III	34	铬酸钠*	7775-11-3	0.005
III	35	水合硼酸钠*	12267-73-1	0.005
III	36	三氯乙烯	79-01-6	0.050
IV	37	乙二醇乙醚	110-80-5	0.050
IV	38	乙二醇单甲醚	109-86-4	0.050
IV	39	铬酸, 铬酸及重铬酸低聚物, 重铬酸*	7738-94-5 - 13530-68-2	0.005



This document is issued by the Company subject to its General Conditions of Service printed overleaf, available on request or accessible at <http://www.sgs.com/en/Terms-and-Conditions.aspx> and, for electronic format documents, subject to Terms and Conditions for Electronic Documents at <http://www.sgs.com/en/Terms-and-Conditions/Terms-e-Documents.aspx>. Attention is drawn to the limitation of liability, indemnification and jurisdiction issues defined therein. Any holder of this document is advised that information contained hereon reflects the Company's findings at the time of its intervention only and within the limits of Client's instructions, if any. The Company's sole responsibility is to its Client and this document does not exonerate parties to a transaction from exercising all their rights and obligations under the transaction documents. This document cannot be reproduced except in full, without prior written approval of the Company. Any unauthorized alteration, forgery or falsification of the content or appearance of this document is unlawful and offenders may be prosecuted to the fullest extent of the law. Unless otherwise stated the results shown in this test report refer only to the sample(s) tested.

Attention: To check the authenticity of testing / inspection report & certificate, please contact us at telephone: (86-755) 8307 1443, or email: CN.Doccheck@sgs.com

198 Kezhu Road, Sciencetech Park Guangzhou Economic & Technology Development District, Guangzhou, China 510663 t (86-20) 82155555 f (86-20) 82075113 www.sgs.com.cn
中国·广州·经济技术开发区科学城科珠路198号 邮编: 510663 t (86-20) 82155555 f (86-20) 82075113 e sgs.china@sgs.com

测试报告
(SVHC)

No. CANEC1500341304

日期: 2015年01月16日 第7页,共33页

附录

所有测试的SVHC:

批次	序号	物质名称	CAS No.	RL (%)
IV	40	三氧化铬*	1333-82-0	0.005
IV	41	碳酸钴*	513-79-1	0.005
IV	42	乙酸钴*	71-48-7	0.005
IV	43	硝酸钴*	10141-05-6	0.005
IV	44	硫酸钴*	10124-43-3	0.005
V	45	1,2,3-三氯丙烷	96-18-4	0.050
V	46	1,2-苯二酸-二(C6-8支链)烷基酯(富C7)	71888-89-6	0.050
V	47	1,2-苯二酸-二(C7-11支链与直链)烷基(醇)酯	68515-42-4	0.050
V	48	1-甲基-2-吡咯烷酮	872-50-4	0.050
V	49	乙二醇乙醚醋酸酯	111-15-9	0.050
V	50	联氨	7803-57-8, 302-01-2	0.050
V	51	铬酸铯*	7789-06-2	0.005
VI	52	1,2-二氯乙烷	107-06-2	0.050
VI	53	4,4'-二氨基-3,3'-二氯二苯甲烷	101-14-4	0.050
VI	54	2-甲氧基苯胺	90-04-0	0.050
VI	55	对特辛基苯酚	140-66-9	0.050
VI	56	硅酸铝耐火陶瓷纤维*	650-017-00-8 (Index no.)	0.005
VI	57	砷酸*	7778-39-4	0.005
VI	58	二乙二醇二甲醚	111-96-6	0.050
VI	59	邻苯二甲酸二甲氧基乙酯	117-82-8	0.050



This document is issued by the Company subject to its General Conditions of Service printed overleaf, available on request or accessible at <http://www.sgs.com/en/Terms-and-Conditions.aspx> and, for electronic format documents, subject to Terms and Conditions for Electronic Documents at <http://www.sgs.com/en/Terms-and-Conditions/Terms-e-Documents.aspx>. Attention is drawn to the limitation of liability, indemnification and jurisdiction issues defined therein. Any holder of this document is advised that information contained hereon reflects the Company's findings at the time of its intervention only and within the limits of Client's instructions, if any. The Company's sole responsibility is to its Client and this document does not exonerate parties to a transaction from exercising all their rights and obligations under the transaction documents. This document cannot be reproduced except in full, without prior written approval of the Company. Any unauthorized alteration, forgery or falsification of the content or appearance of this document is unlawful and offenders may be prosecuted to the fullest extent of the law. Unless otherwise stated the results shown in this test report refer only to the sample(s) tested.

Attention: To check the authenticity of testing / inspection report & certificate, please contact us at telephone: (86-755) 8307 1443, or email: CN.Doccheck@sgs.com

198 Kezhu Road, Sciencetech Park Guangzhou Economic & Technology Development District, Guangzhou, China 510663 t (86-20) 82155555 f (86-20) 82075113 www.sgs.com.cn
中国·广州·经济技术开发区科学城科珠路198号 邮编: 510663 t (86-20) 82155555 f (86-20) 82075113 e sgs.china@sgs.com

测试报告
(SVHC)

No. CANEC1500341304

日期: 2015年01月16日 第8页,共33页

附录

所有测试的SVHC:

批次	序号	物质名称	CAS No.	RL (%)
VI	60	砷酸钙*	7778-44-1	0.005
VI	61	铬酸铬*	24613-89-6	0.005
VI	62	甲醛与苯胺的低聚物	25214-70-4	0.050
VI	63	叠氮化铅*	13424-46-9	0.005
VI	64	苦味酸铅*	6477-64-1	0.005
VI	65	史蒂芬酸铅*	15245-44-0	0.005
VI	66	N,N-二甲基乙酰胺	127-19-5	0.050
VI	67	氢氧化铬酸锌*	49663-84-5	0.005
VI	68	酚酞	77-09-8	0.050
VI	69	氢氧化铬酸锌钾*	11103-86-9	0.005
VI	70	砷酸铅*	3687-31-8	0.005
VI	71	氧化锆硅酸铝耐火陶瓷纤维*	650-017-00-8 (Index no.)	0.005
VII	72	C.I.碱性蓝26§	2580-56-5	0.050
VII	73	C.I.碱性紫3§	548-62-9	0.050
VII	74	三乙二醇二甲醚(TEGDME)	112-49-2	0.050
VII	75	乙二醇二甲醚(EGDME)	110-71-4	0.050
VII	76	4,4'-二(二甲氨基)二苯甲酮(米氏酮)	90-94-8	0.050
VII	77	4,4'-二(二甲氨基)-4''-甲氨基三苯甲醇§	561-41-1	0.050
VII	78	三氧化二硼*	1303-86-2	0.005
VII	79	甲酰胺	75-12-7	0.050



This document is issued by the Company subject to its General Conditions of Service printed overleaf, available on request or accessible at <http://www.sgs.com/en/Terms-and-Conditions.aspx> and, for electronic format documents, subject to Terms and Conditions for Electronic Documents at <http://www.sgs.com/en/Terms-and-Conditions/Terms-e-Document.aspx>. Attention is drawn to the limitation of liability, indemnification and jurisdiction issues defined therein. Any holder of this document is advised that information contained hereon reflects the Company's findings at the time of its intervention only and within the limits of Client's instructions, if any. The Company's sole responsibility is to its Client and this document does not exonerate parties to a transaction from exercising all their rights and obligations under the transaction documents. This document cannot be reproduced except in full, without prior written approval of the Company. Any unauthorized alteration, forgery or falsification of the content or appearance of this document is unlawful and offenders may be prosecuted to the fullest extent of the law. Unless otherwise stated the results shown in this test report refer only to the sample(s) tested.

Attention: To check the authenticity of testing / inspection report & certificate, please contact us at telephone: (86-755) 8307 1443, or email: CN.Doccheck@sgs.com

198 Kezhu Road, Sciencetech Park Guangzhou Economic & Technology Development District, Guangzhou, China 510663 t (86-20) 82155555 f (86-20) 82075113 www.sgs.com.cn
中国·广州·经济技术开发区科学城科珠路198号 邮编: 510663 t (86-20) 82155555 f (86-20) 82075113 e sgs.china@sgs.com

测试报告 (SVHC)

No. CANEC1500341304

日期: 2015年01月16日 第9页,共33页

附录

所有测试的SVHC:

批次	序号	物质名称	CAS No.	RL (%)
VII	80	甲基磺酸铅*	17570-76-2	0.005
VII	81	N,N,N',N'-四甲基-4,4'-二氨基二苯甲烷(米氏碱)	101-61-1	0.050
VII	82	1,3,5-三(环氧乙基甲基)-1,3,5-三嗪-2,4,6-(1H, 3H,5H)-三酮(TGIC)	2451-62-9	0.050
VII	83	C.I.溶剂蓝4§	6786-83-0	0.050
VII	84	1,3,5-三-[(2S和2R)-2,3-环氧丙基]-1,3,5-三嗪-2,4,6-(1H, 3H, 5H)-三酮(β-TGIC)	59653-74-6	0.050
VIII	85	二盐基邻苯二甲酸铅*	69011-06-9	0.005
VIII	86	1,2-苯二酸-二(支链与直链)戊基酯	84777-06-0	0.050
VIII	87	乙二醇二乙醚	629-14-1	0.050
VIII	88	1-溴丙烷	106-94-5	0.050
VIII	89	3-乙基-2-甲基-2-(3-甲基丁基)-1,3-恶唑烷	143860-04-2	0.050
VIII	90	对特辛基苯酚乙氧基醚	-	0.050
VIII	91	4,4'-二氨基-3,3'-二甲基二苯甲烷	838-88-0	0.050
VIII	92	4,4'-二氨基二苯醚及其盐	101-80-4	0.050
VIII	93	4-氨基偶氮苯	60-09-3	0.050
VIII	94	2,4-二氨基甲苯	95-80-7	0.050
VIII	95	4-壬基(支链与直链)苯酚	-	0.050
VIII	96	2-甲氧基-5-甲基苯胺	120-71-8	0.050
VIII	97	碱式乙酸铅*	51404-69-4	0.005
VIII	98	4-氨基联苯	92-67-1	0.050
VIII	99	十溴二苯醚(DecaBDE)	1163-19-5	0.050



This document is issued by the Company subject to its General Conditions of Service printed overleaf, available on request or accessible at <http://www.sgs.com/en/Terms-and-Conditions.aspx> and, for electronic format documents, subject to Terms and Conditions for Electronic Documents at <http://www.sgs.com/en/Terms-and-Conditions/Terms-e-Documents.aspx>. Attention is drawn to the limitation of liability, indemnification and jurisdiction issues defined therein. Any holder of this document is advised that information contained hereon reflects the Company's findings at the time of its intervention only and within the limits of Client's instructions, if any. The Company's sole responsibility is to its Client and this document does not exonerate parties to a transaction from exercising all their rights and obligations under the transaction documents. This document cannot be reproduced except in full, without prior written approval of the Company. Any unauthorized alteration, forgery or falsification of the content or appearance of this document is unlawful and offenders may be prosecuted to the fullest extent of the law. Unless otherwise stated the results shown in this test report refer only to the sample(s) tested.

Attention: To check the authenticity of testing / inspection report & certificate, please contact us at telephone: (86-755) 8307 1443, or email: CN.Doccheck@sgs.com

198 Kezhu Road, Sciencetech Park Guangzhou Economic & Technology Development District, Guangzhou, China 510663 t (86-20) 82155555 f (86-20) 82075113 www.sgs.com.cn
中国·广州·经济技术开发区科学城科珠路198号 邮编: 510663 t (86-20) 82155555 f (86-20) 82075113 e sgs.china@sgs.com

测试报告
(SVHC)

No. CANEC1500341304

日期: 2015年01月16日 第10页,共33页

附录

所有测试的SVHC:

批次	序号	物质名称	CAS No.	RL (%)
VIII	100	环己烷-1,2-二羧酸酐,顺式-环己烷-1,2-二羧酸酐,反式-环己烷-1,2-二羧酸酐	85-42-7, 13149-00-3, 14166-21-3	0.050
VIII	101	偶氮二甲酰胺	123-77-3	0.050
VIII	102	二丁基二氯化锡(DBTC)	683-18-1	0.050
VIII	103	硫酸二乙酯	64-67-5	0.050
VIII	104	邻苯二甲酸二异戊酯	605-50-5	0.050
VIII	105	硫酸二甲酯	77-78-1	0.050
VIII	106	地乐酚	88-85-7	0.050
VIII	107	双(十八烷基)二氧化三铅*	12578-12-0	0.005
VIII	108	C16-18-脂肪酸铅*	91031-62-8	0.005
VIII	109	呋喃	110-00-9	0.050
VIII	110	全氟十一烷酸	2058-94-8	0.050
VIII	111	全氟十四烷酸	376-06-7	0.050
VIII	112	甲基六氢邻苯二甲酸酐,4-甲基六氢邻苯二甲酸酐,1-甲基六氢邻苯二甲酸酐,3-甲基六氢邻苯二甲酸酐	☆	0.050
VIII	113	四氟硼酸铅*	13814-96-5	0.005
VIII	114	氨基氰铅盐*	20837-86-9	0.005
VIII	115	硝酸铅*	10099-74-8	0.005
VIII	116	一氧化铅*	1317-36-8	0.005
VIII	117	碱式硫酸铅*	12036-76-9	0.005
VIII	118	四氧化三铅*	1314-41-6	0.005
VIII	119	钛酸铅*	12060-00-3	0.005



This document is issued by the Company subject to its General Conditions of Service printed overleaf, available on request or accessible at <http://www.sgs.com/en/Terms-and-Conditions.aspx> and, for electronic format documents, subject to Terms and Conditions for Electronic Documents at <http://www.sgs.com/en/Terms-and-Conditions/Terms-e-Documents.aspx>. Attention is drawn to the limitation of liability, indemnification and jurisdiction issues defined therein. Any holder of this document is advised that information contained hereon reflects the Company's findings at the time of its intervention only and within the limits of Client's instructions, if any. The Company's sole responsibility is to its Client and this document does not exonerate parties to a transaction from exercising all their rights and obligations under the transaction documents. This document cannot be reproduced except in full, without prior written approval of the Company. Any unauthorized alteration, forgery or falsification of the content or appearance of this document is unlawful and offenders may be prosecuted to the fullest extent of the law. Unless otherwise stated the results shown in this test report refer only to the sample(s) tested.

Attention: To check the authenticity of testing /inspection report & certificate, please contact us at telephone: (86-755) 8307 1443, or email: CN.Doccheck@sgs.com

198 Kezhu Road, Sciencetech Park Guangzhou Economic & Technology Development District, Guangzhou, China 510663 t (86-20) 82155555 f (86-20) 82075113 www.sgs.com.cn
中国·广州·经济技术开发区科学城科珠路198号 邮编: 510663 t (86-20) 82155555 f (86-20) 82075113 e sgs.china@sgs.com

测试报告
(SVHC)

No. CANEC1500341304

日期: 2015年01月16日 第11页,共33页

附录

所有测试的SVHC:

批次	序号	物质名称	CAS No.	RL (%)
VIII	120	钛酸铅锆*	12626-81-2	0.005
VIII	121	甲氧基乙酸	625-45-6	0.050
VIII	122	1,2-环氧丙烷	75-56-9	0.050
VIII	123	N,N-二甲基甲酰胺	68-12-2	0.050
VIII	124	N-甲基乙酰胺	79-16-3	0.050
VIII	125	邻苯二甲酸正戊基异戊基酯	776297-69-9	0.050
VIII	126	邻-氨基偶氮甲苯	97-56-3	0.050
VIII	127	2-氨基甲苯	95-53-4	0.050
VIII	128	全氟十三烷酸	72629-94-8	0.050
VIII	129	硫酸四氧化五铅*	12065-90-6	0.005
VIII	130	铅锑黄*	8012-00-8	0.005
VIII	131	掺杂铅的硅酸钡*	68784-75-8	0.005
VIII	132	硅酸铅*	11120-22-2	0.005
VIII	133	二碱式亚硫酸铅*	62229-08-7	0.005
VIII	134	四乙基铅*	78-00-2	0.005
VIII	135	硫酸三氧化四铅*	12202-17-4	0.005
VIII	136	全氟十二烷酸	307-55-1	0.050
VIII	137	碱式碳酸铅*	1319-46-6	0.005
VIII	138	二碱式亚磷酸铅*	12141-20-7	0.005
IX	139	4-壬基(支链与直链)苯酚乙氧基醚	-	0.050
IX	140	全氟辛酸铵(APFO)	3825-26-1	0.050



This document is issued by the Company subject to its General Conditions of Service printed overleaf, available on request or accessible at <http://www.sgs.com/en/Terms-and-Conditions.aspx> and, for electronic format documents, subject to Terms and Conditions for Electronic Documents at <http://www.sgs.com/en/Terms-and-Conditions/Terms-e-Documents.aspx>. Attention is drawn to the limitation of liability, indemnification and jurisdiction issues defined therein. Any holder of this document is advised that information contained hereon reflects the Company's findings at the time of its intervention only and within the limits of Client's instructions, if any. The Company's sole responsibility is to its Client and this document does not exonerate parties to a transaction from exercising all their rights and obligations under the transaction documents. This document cannot be reproduced except in full, without prior written approval of the Company. Any unauthorized alteration, forgery or falsification of the content or appearance of this document is unlawful and offenders may be prosecuted to the fullest extent of the law. Unless otherwise stated the results shown in this test report refer only to the sample(s) tested.

Attention: To check the authenticity of testing / inspection report & certificate, please contact us at telephone: (86-755) 8307 1443, or email: CN.Doccheck@sgs.com

SGS Standards Technical Services Co., Ltd.
Guangzhou Chemical Laboratory

198 Kezhu Road, Sciencetech Park Guangzhou Economic & Technology Development District, Guangzhou, China 510663 t (86-20) 82155555 f (86-20) 82075113 www.sgsgroup.com.cn
中国·广州·经济技术开发区科学城科珠路198号 邮编: 510663 t (86-20) 82155555 f (86-20) 82075113 e sgs.china@sgs.com

测试报告
(SVHC)

No. CANEC1500341304

日期: 2015年01月16日 第12页,共33页

附录

所有测试的SVHC:

批次	序号	物质名称	CAS No.	RL (%)
IX	141	氧化镉*	1306-19-0	0.005
IX	142	镉*	7440-43-9	0.005
IX	143	邻苯二甲酸二正戊酯(DPP)	131-18-0	0.050
IX	144	全氟辛酸(PFOA)	335-67-1	0.050
X	145	硫化镉*	1306-23-6	0.005
X	146	邻苯二甲酸二正己酯	84-75-3	0.050
X	147	C.I.直接红28	573-58-0	0.050
X	148	C.I.直接黑38	1937-37-7	0.050
X	149	2-巯基咪唑啉	96-45-7	0.050
X	150	乙酸铅*	301-04-2	0.005
X	151	磷酸三二甲苯酯	25155-23-1	0.050
XI	152	邻苯二甲酸二(支链与直链)己基酯	68515-50-4	0.050
XI	153	氯化镉*	10108-64-2	0.005
XI	154	水合过硼酸钠*	-	0.005
XI	155	过硼酸钠*	7632-04-4	0.005
XII	156	2-(2H-苯并三唑-2-基)-4,6-二叔戊基苯酚 (UV-328)	25973-55-1	0.050
XII	157	2-苯并三唑-2-基-4,6-二叔丁基苯酚 (UV-320)	3846-71-7	0.050
XII	158	二正辛基-双(2-乙基己基巯基乙酸酯)锡 (DOTE)	15571-58-1	0.050
XII	159	氟化镉*	7790-79-6	0.005
XII	160	硫酸镉*	10124-36-4, 31119-53-6	0.005



This document is issued by the Company subject to its General Conditions of Service printed overleaf, available on request or accessible at <http://www.sgs.com/en/Terms-and-Conditions.aspx> and, for electronic format documents, subject to Terms and Conditions for Electronic Documents at <http://www.sgs.com/en/Terms-and-Conditions/Terms-e-Documents.aspx>. Attention is drawn to the limitation of liability, indemnification and jurisdiction issues defined therein. Any holder of this document is advised that information contained hereon reflects the Company's findings at the time of its intervention only and within the limits of Client's instructions, if any. The Company's sole responsibility is to its Client and this document does not exonerate parties to a transaction from exercising all their rights and obligations under the transaction documents. This document cannot be reproduced except in full, without prior written approval of the Company. Any unauthorized alteration, forgery or falsification of the content or appearance of this document is unlawful and offenders may be prosecuted to the fullest extent of the law. Unless otherwise stated the results shown in this test report refer only to the sample(s) tested.

Attention: To check the authenticity of testing / inspection report & certificate, please contact us at telephone: (86-755) 8307 1443, or email: CN.Doccheck@sgs.com

198 Kezhu Road, Sciencetech Park Guangzhou Economic & Technology Development District, Guangzhou, China 510663 t (86-20) 82155555 f (86-20) 82075113 www.sgs.com.cn
中国·广州·经济技术开发区科学城科珠路198号 邮编: 510663 t (86-20) 82155555 f (86-20) 82075113 e sgs.china@sgs.com

测试报告 (SVHC)

No. CANEC1500341304

日期: 2015年01月16日 第13页,共33页

附录

所有测试的SVHC:

批次	序号	物质名称	CAS No.	RL (%)
XII	161	二正辛基-双(2-乙基己基巯基乙酸酯)锡(DOTE)和单辛基-三(2-乙基己基巯基乙酸酯)锡(MOTE)的反应物	-	0.050



This document is issued by the Company subject to its General Conditions of Service printed overleaf, available on request or accessible at <http://www.sgs.com/en/Terms-and-Conditions.aspx> and, for electronic format documents, subject to Terms and Conditions for Electronic Documents at <http://www.sgs.com/en/Terms-and-Conditions/Terms-e-Documents.aspx>. Attention is drawn to the limitation of liability, indemnification and jurisdiction issues defined therein. Any holder of this document is advised that information contained hereon reflects the Company's findings at the time of its intervention only and within the limits of Client's instructions, if any. The Company's sole responsibility is to its Client and this document does not exonerate parties to a transaction from exercising all their rights and obligations under the transaction documents. This document cannot be reproduced except in full, without prior written approval of the Company. Any unauthorized alteration, forgery or falsification of the content or appearance of this document is unlawful and offenders may be prosecuted to the fullest extent of the law. Unless otherwise stated the results shown in this test report refer only to the sample(s) tested.

Attention: To check the authenticity of testing / inspection report & certificate, please contact us at telephone: (86-755) 8307 1443, or email: CN.Doccheck@sgs.com

SGS Standards Technical Services Co., Ltd.
Guangzhou Chemical Laboratory

198 Kezhu Road, Sciencetech Park Guangzhou Economic & Technology Development District, Guangzhou, China 510663 t (86-20) 82155555 f (86-20) 82075113 www.sgsgroup.com.cn
中国·广州·经济技术开发区科学城科珠路198号 邮编: 510663 t (86-20) 82155555 f (86-20) 82075113 e sgs.china@sgs.com

测试报告 (SVHC)

No. CANEC1500341304

日期: 2015年01月16日 第14页,共33页

REMARK 1

R-1,R-3,R-6 , A-405 , DO-41 , DO-15,DO-27 , 17-02 , SMAF,SMBF,DB-1,DB-S,
RS-1 , RB-15 , WOM,WOL,RS-2 , RS-2M,BR-3 , RS-4L,RS-4M,BR-6 , RL-6L,
RS-6M,BR-8 , RS-8L,RS-8M,DO-213AA,DO-213AB,DO-214AA,DO-214AB,
DO-214AC,SM-1 , MDS,MB-M,KBL,KBJ,GBJ,MB15/W,MB25/W,MB35/W,BR -10 ,
SOD-123,SOD-123FL , SOD323 , SOD523 , SOT23 , TO-220F , TO-220,
ITO-220 ITO-220F , DO-201 , KBPC,KBU,GBU,KBP,TO -263 , TO-3P,DO-35 ,
LL-34 , LL-41 , AR,DO-201AE , TO-247 , SS,GBL,BR-10 , MP/W,DF,DFS,ABS,
WOM-S,ADS,MBF,LBS,ABF



This document is issued by the Company subject to its General Conditions of Service printed overleaf, available on request or accessible at <http://www.sgs.com/en/Terms-and-Conditions.aspx> and, for electronic format documents, subject to Terms and Conditions for Electronic Documents at <http://www.sgs.com/en/Terms-and-Conditions/Terms-e-Documents.aspx>. Attention is drawn to the limitation of liability, indemnification and jurisdiction issues defined therein. Any holder of this document is advised that information contained hereon reflects the Company's findings at the time of its intervention only and within the limits of Client's instructions, if any. The Company's sole responsibility is to its Client and this document does not exonerate parties to a transaction from exercising all their rights and obligations under the transaction documents. This document cannot be reproduced except in full, without prior written approval of the Company. Any unauthorized alteration, forgery or falsification of the content or appearance of this document is unlawful and offenders may be prosecuted to the fullest extent of the law. Unless otherwise stated the results shown in this test report refer only to the sample(s) tested.

Attention: To check the authenticity of testing /inspection report & certificate, please contact us at telephone: (86-755) 8307 1443, or email: CN.Doccheck@sgs.com

SGS Standards Technical Services Co., Ltd.
Guangzhou Chemical Laboratory

198 Kezhu Road, Sciencetech Park Guangzhou Economic & Technology Development District, Guangzhou, China 510663 t (86-20) 82155555 f (86-20) 82075113 www.sgsgroup.com.cn
中国·广州·经济技术开发区科学城科珠路198号 邮编: 510663 t (86-20) 82155555 f (86-20) 82075113 e sgs.china@sgs.com

REMARK2

ATTACHMENT	
PACKAGE	PART NUMBER
R-1	1S20 1S30 1S40 1S50 1S60 1S80 1S90 1S100 1S150 1S200 1U1 1U2 1U3 1U4 1U5 1U6 1U7 1U8 1H1 1H2 1H3 1H4 1H5 1H6 1H7 1H8 1F1 1F2 1F3 1F4 1F5 1F6 1F7 1A1 1A2 1A3 1A4 1A5 1A6 1A7 1U1 G 1U2G 1U3G 1U4G 1U5G 1U6G 1U7G 1U8G 1H1G 1H2G 1H3G 1H4G 1H5G 1H6G 1H7G 1H8G 1F1G 1F2G 1F3G 1F4G 1F5G 1F6G 1F7G 1A1G 1A2G 1A3G 1A4G 1A5G 1A6G 1A7G RB100A
DO-41	SR190 SR1100 SR1150 SR220 SR230 SR240 SR250 SR260 SR280 SR290 SR2100 SR2150 SR2200 SF11 SF12 SF13 SF14 SF15 SF16 SF17 SF18 HER101 HER102 HER103 HER104 HER105 HER106 HER107 HER108 FR101 FR102 FR103 FR104 FR105 FR106 FR107 1N4933 1N4934 1N4935 1N4936 1N4937 1N4942 1N4944 1N4946 1 N4947 1N4948 1N4728~1N4764 1N4001 1N4002 1N4003 1N4004 1N4005 1 N4006 1N4007 SF11G SF12G SF13G SF14G SF15G SF16G SF17G SF18G HER101G HER102G HER103G HER104G HER105G HER106G HER107G HER108G FR101G FR102G FR103G FR104G FR105G FR106G FR107G 1N4933G 1 N4934G 1N4935G 1 N4936G 1N4937G 1N4942G 1 N4944G 1N4946G 1 N4947G 1N4948G 1N4001G 1N4002G 1N4003G 1 N4004G 1N4005G 1N4006G 1N4007G R1200 R1500 R1600 R1800 R2000 R1200F R1500F R1600F R1800F R2000F



This document is issued by the Company subject to its General Conditions of Service printed overleaf, available on request or accessible at <http://www.sgs.com/en/Terms-and-Conditions.aspx> and, for electronic format documents, subject to Terms and Conditions for Electronic Documents at <http://www.sgs.com/en/Terms-and-Conditions/Terms-e-Documents.aspx>. Attention is drawn to the limitation of liability, indemnification and jurisdiction issues defined therein. Any holder of this document is advised that information contained hereon reflects the Company's findings at the time of its intervention only and within the limits of Client's instructions, if any. The Company's sole responsibility is to its Client and this document does not exonerate parties to a transaction from exercising all their rights and obligations under the transaction documents. This document cannot be reproduced except in full, without prior written approval of the Company. Any unauthorized alteration, forgery or falsification of the content or appearance of this document is unlawful and offenders may be prosecuted to the fullest extent of the law. Unless otherwise stated the results shown in this test report refer only to the sample(s) tested.

Attention: To check the authenticity of testing /inspection report & certificate, please contact us at telephone: (86-755) 8307 1443, or email: CN.Doccheck@sgs.com

A-405	<p>SR120S SR130S SR140S SR150S SR160S SR180S SR190S SR1100S SR1150S SR1200S SF11S SF12S SF13S SF14S SF15S SF16S SF17S SF18S HER101S HER102S HER103S HER104S HER105S HER106S HER107S HER108S RL101F RL102F RL103F RL104F RL105F RL106F RL107F 1N4001S 1N4002S 1N4003S 1N4004S 1N4005S 1N4006S 1N4007S SF11SG SF12SG SF13SG SF14SG SF15SG SF16SG SF17SG SF18SG HER101SG HER102SG HER103SG HER104SG HER105SG HER106SG HER107SG HER108SG FR101FG FR102FG FR103FG FR104FG FR105FG FR106FG</p>
DO-15	<p>SR220 SR230 SR240 SR250 SR260 SR280 SR290 SR2100 SR2150 SR2200 SF21 SF22 SF23 SF24 SF25 SF26 SF27 SF28 HER151 HER152 HER153 HER154 HER155 HER156 HER157 HER158 HER201 HER202 HER203 HERZO4 HER205 HER206 HER207 HER208 FR151 FR152 FR153 FR154 FR155 FR156 FR157 FR201 FR202 FR203 FR204 FR205 FR206 FR207 1N5391 1N5392 1N5393 1N5395 1N5397 1N5398 1N5399 RL151 RL152 RL153 RL154 RL155 RL156 RL157 RL201 RL202 RL203 RL204 RL205 RL206 RL207 R2500 R3000 R3500 R4000 R2500F R3000F R3500F R4000F SF21 G SF22G SF23G SF24G SF25G SF26G SF27G SF28G HER151G HER152G HER153G HER154G HER155G HER156G HER157G HER158G HER201G HER202G HER203G HER204G HER205G HER206G HER207G HER208G FR151G FR152G FR153G FR154G FR155G FR156G FR157G FR201 G FR202G FR203G FR204G FR205G FR206G FR207G 1N5391G 1N5392G 1N5393G 1N5395G 1N5397G 1N5398G 1N5399G RL151G RL152G RL153G RL154G RL155G RL156G RL157G RL201G RL202G RL203G RL204G RL205G RL206G RL207G</p>



This document is issued by the Company subject to its General Conditions of Service printed overleaf, available on request or accessible at <http://www.sgs.com/en/Terms-and-Conditions.aspx> and, for electronic format documents, subject to Terms and Conditions for Electronic Documents at <http://www.sgs.com/en/Terms-and-Conditions/Terms-e-Document.aspx>. Attention is drawn to the limitation of liability, indemnification and jurisdiction issues defined therein. Any holder of this document is advised that information contained hereon reflects the Company's findings at the time of its intervention only and within the limits of Client's instructions, if any. The Company's sole responsibility is to its Client and this document does not exonerate parties to a transaction from exercising all their rights and obligations under the transaction documents. This document cannot be reproduced except in full, without prior written approval of the Company. Any unauthorized alteration, forgery or falsification of the content or appearance of this document is unlawful and offenders may be prosecuted to the fullest extent of the law. Unless otherwise stated the results shown in this test report refer only to the sample(s) tested.

Attention: To check the authenticity of testing /inspection report & certificate, please contact us at telephone: (86-755) 8307 1443, or email: CN.Doccheck@sgs.com

DO-27	<p>1N5820 1N5821 1N5822 1N5823 1N5824 1N5825 SR320 SR330 SR340 SR350 SR360 SR380 SR390 SR3100 SR3150 SR3200 SR520 SR530 SR540 SR550 SR560 SR580 SR590 SR5100 SR5150 SR5200 SF31 SF32 SF33 SF34 SF35 SF36 SF37 SF38 SF51 SF52 SF53 SF54 SF55 SF56 SF57 SF58 SF61 SF62 SF63 SF64 SF65 SF66 SF67 SF68 HER301 HER302 HER303 HER304 HERSO5 HER306 HER307 HER308 HER501 HER502 HER503 HER504 HER505 HER506 HER507 HER508 FR301 FR302 FR303 FR304 FR305 FR306 FR307 FR309 1N5400 1N5401 1N5402 1N5404 1N5406 1N5407 1N5408 SF31G SF32G SF33G SF34G SF35G SF36G SF37G SF38G HER301G HER302G HER303G HER304G HER305G HER306G HER307G HER308G HER501G HER502G HER503G HER504G HER505G HER506G HER507G HER508G FR301G FR302G FR303G FR304G FR305G FR306G FR307G 1N5400G 1N5401G 1N5402G 1N5404G 1N5406G 1N5407G 1N5408G</p>
R-3	<p>RL251 RL252 RL253 RL254 RL255 RL256 RL257 FR251 FR252 FR253 FR254 FR255 FR256 FR257</p>
R-6	<p>HER601 HER602 HER603 HER604 HER605 HER606 HER607 FR601 FR602 FR603 FR604 FR605 FR606 FR607 6A05 6A1 6A2 6A4 6A6 6A8 6A10 8A05 8A1 8A2 8A4 8A6 8A8 8A10 10A05 10A1 10A2 10A4 10A6 10A8 10A10 6A05G 6A1G 6A2G 6A4G 6A6G 6A8G 6A10G</p>
TVS PRO	<p>P4KE6.8~ P4KE440A SA5.0 ~ SA180A P6KE6.8~ P6KE440A 1.5KE6.8~1.5KE440A SMAJ5.0~SMAJ200CA SMBJ5.0~ SMBJ200CA SMCJ5.0~ SMCJ200CA 3KP 5KP 10KP</p>



This document is issued by the Company subject to its General Conditions of Service printed overleaf, available on request or accessible at <http://www.sgs.com/en/Terms-and-Conditions.aspx> and, for electronic format documents, subject to Terms and Conditions for Electronic Documents at <http://www.sgs.com/en/Terms-and-Conditions/Terms-e-Documents.aspx>. Attention is drawn to the limitation of liability, indemnification and jurisdiction issues defined therein. Any holder of this document is advised that information contained hereon reflects the Company's findings at the time of its intervention only and within the limits of Client's instructions, if any. The Company's sole responsibility is to its Client and this document does not exonerate parties to a transaction from exercising all their rights and obligations under the transaction documents. This document cannot be reproduced except in full, without prior written approval of the Company. Any unauthorized alteration, forgery or falsification of the content or appearance of this document is unlawful and offenders may be prosecuted to the fullest extent of the law. Unless otherwise stated the results shown in this test report refer only to the sample(s) tested.

Attention: To check the authenticity of testing /inspection report & certificate, please contact us at telephone: (86-755) 8307 1443, or email: CN.Doccheck@sgs.com

TO-220A	<p>SR820 SR830 SR840 SR845 SR850 SR8 60 SR880 SR8100 SR8150 SR8200 SR1020 SR1030 SR1040 SR1045 SR1050 SR1060 SR1080 SR10100 SR10150 SR10200 SF81 SF82 SF83 SF84 SF85 SF86 SF87 SF88 HER801 HER802 HER803 HER804 H5805 HER806 HER807 FR801 FR802 FR803 FR804 FR805 FR806 FR807 MBR1020 MBR1030 MBR1040 MBR1045 MBR1050 MBR1060 MBR1080 MBR10100 MBR10150 MBR10200 MBR1620 MBR1630 MBR1640 MBR1645 MBR1650 MBR1660 MBR1680 MBR16100 MBR16150 MBR16200 MBR2020 MBR2030 MBR2040 MBR2045 MBR2050 MBR2060 MBR2080 MBR20100 MBR20150 MBR20200</p>
IT0-220A	<p>SRF8150 SRF8200 SRF1020 SRF1030 SRF1040 SRF1045 SRF1050 SRF1060 SRF1080 SRF10100 SRF10150 SRF1 0200 SFF81 SFF82 SFF83 SFF84 SFF85 SFF86 SFF87 SFF88 HERF801 HERF802 HERF803 HERF804 HRF805 H\$F806 HERF8 07 FRF801 FRF802 FRF803 FRF804 FRF805 FRF806 FRF807 MBRF1020 MBRF1030 MBRF1040 MBRF1045 MBRF1050 MBRF1060 MBRF1080 MBRF10100 MBRF10150 MBRF10200 MBRF1620 MBRF1630 MBRF1640 MBRF1645 MBRF1650 MBRF1660 MBRF1680 MBRF16100 MBRF16150 MBRF16200 MBRF2020 MBRF2030 MBRF2040 MBRF2045 MBRF2050 MBRF2060 MBRF2080 MBRF20100 MBRF20150 MBRF20200</p>



This document is issued by the Company subject to its General Conditions of Service printed overleaf, available on request or accessible at <http://www.sgs.com/en/Terms-and-Conditions.aspx> and, for electronic format documents, subject to Terms and Conditions for Electronic Documents at <http://www.sgs.com/en/Terms-and-Conditions/Terms-e-Documents.aspx>. Attention is drawn to the limitation of liability, indemnification and jurisdiction issues defined therein. Any holder of this document is advised that information contained hereon reflects the Company's findings at the time of its intervention only and within the limits of Client's instructions, if any. The Company's sole responsibility is to its Client and this document does not exonerate parties to a transaction from exercising all their rights and obligations under the transaction documents. This document cannot be reproduced except in full, without prior written approval of the Company. Any unauthorized alteration, forgery or falsification of the content or appearance of this document is unlawful and offenders may be prosecuted to the fullest extent of the law. Unless otherwise stated the results shown in this test report refer only to the sample(s) tested.

Attention: To check the authenticity of testing /inspection report & certificate, please contact us at telephone: (86-755) 8307 1443, or email: CN.Doccheck@sgs.com

TO-220	<p>SR1020CT SR1030CT SR1040CT SR1045CT SR1050CT SR1060CT SR1080CT SR10100CT SR10150CT SR10200CT SR1620CT SR1630CT SR1640CT SR1645C SR1650CT SR1660CT SR1680CT SR16100CT SR16150CT SR16200CT SR2020CT SR2030CT SR2040CT SR2045C SR2050CT SR2060T SR2080CT SR20100CT SR20150CT SR20200CT SR2520CT SR2530CT SR2540CT SR2545C SR2550CT SR2560CT SR2580CT SR25100CTSR25150CTSR25200CT SR3020CT SR3030CT SR3040CT SR3045C SR3050CT SR3060CT SR3080CT SR30100CT SR30150CT SR30200CTSF101CT SF102CT SF103CT SF104CT SF105CT SF106CT SF107CT SF108CTSF121CT SF122CT SF123CT SF124CT SF125CT SF126CT SF127CT SF128CT SF161CT SF162CT SF163CT SF164CT SF165CT SF166CT SF167CT SF168CT HE1601CTHER1602CTHER1603CTHER1604CTHER1605CT HER1606CT HER1607CTFR1601CT F1602CT FR1603CT FR1604CT FR1605CT FR1606CT FR1607CTMBR1020CT MBR1030CT MBR1040CT MBR1045CT MBR1050CT MBR1060CT MBR1080CT MBR10100CT MBR10150CT MBR10200CT MBR1620CT MBR1630CT MBR1640CT MBR1645CT MBR1650CT MBR1660CT MBR1680CT MBR16100CT MBR16150CT MBR16200CTMBR2020CT MBR2030CT MBR2040CT MBR2045CT MBR2050CT MBR2060CT MBR2080CT MBR20100CT MBR20150CT MBR20200CT</p>
--------	---



This document is issued by the Company subject to its General Conditions of Service printed overleaf, available on request or accessible at <http://www.sgs.com/en/Terms-and-Conditions.aspx> and, for electronic format documents, subject to Terms and Conditions for Electronic Documents at <http://www.sgs.com/en/Terms-and-Conditions/Terms-e-Documents.aspx>. Attention is drawn to the limitation of liability, indemnification and jurisdiction issues defined therein. Any holder of this document is advised that information contained hereon reflects the Company's findings at the time of its intervention only and within the limits of Client's instructions, if any. The Company's sole responsibility is to its Client and this document does not exonerate parties to a transaction from exercising all their rights and obligations under the transaction documents. This document cannot be reproduced except in full, without prior written approval of the Company. Any unauthorized alteration, forgery or falsification of the content or appearance of this document is unlawful and offenders may be prosecuted to the fullest extent of the law. Unless otherwise stated the results shown in this test report refer only to the sample(s) tested.

Attention: To check the authenticity of testing /inspection report & certificate, please contact us at telephone: (86-755) 8307 1443, or email: CN.Doccheck@sgs.com

198 Kezhu Road, Sciencetech Park Guangzhou Economic & Technology Development District, Guangzhou, China 510663 t (86-20) 82155555 f (86-20) 82075113 www.sgsgroup.com.cn
中国·广州·经济技术开发区科学城科珠路198号 邮编: 510663 t (86-20) 82155555 f (86-20) 82075113 e sgs.china@sgs.com

198 Kezhu Road, Sciencetech Park Guangzhou Economic & Technology Development District, Guangzhou, China 510663 t (86-20) 82155555 f (86-20) 82075113 www.sgsgroup.com.cn
中国·广州·经济技术开发区科学城科珠路198号 邮编: 510663 t (86-20) 82155555 f (86-20) 82075113 e sgs.china@sgs.com

ITO-220	<p>SRF1020CT SRF1030CT SRF1040CT SRF1045C SRF1050CT SRF1060CT SRF1080CT SRF1 0100CT SRF10150CT SRF10200CT SRF1620CT SRF1630CT SRF1640CT SRF1645C SRF1650CT SRF1660CT SRF1680CT SRF1 6100 SRF16150CT SRF16200CT SRF2020CT SRF2030CT SRF2040CT SRF2045C SRF2050CT SRF2060CT SRF2080CT SRF20100CT SRF20150CT SRF20200CT SRF2520CT SRF2530CT SRF2540CT SRF2545C SRF2550CT SRF2560CT SRF2580CT SRF251 0OCT SRF251 50CT SRF25200CT SRF3020CT SRF3030CT SRF3040CT SRF3045C SRF3050CT SRF3060CT SRF3080CT SRF30100 SRF30150CT SRF30200CT SFF101CT SFF102CT SFF103CT SFF104CT SFF105CT SFF106CT SFF107CT SFF108CT SFF121CT SFF122CT SFF123CT SFF124CT SFF125CT SFF126CT SFF127CT SFF128CT SFF161CT SFF162CT SFF163CT SFF164CT SFF165CT SFF166CT SFF167CT SFF1 68CT HERF1601CT HERF1602CT HERF1603CT HERF1604CT HERD1605CT HERF1606CT HERF1607CTFRF1601CT FRF1602CT FRF1603CT FRF1604CT FRF1605CT FRF1606CT FRF1607CT MBRF1020CT MBRF1030CT MBRF1040CT MBRF1045CT MBRF1050CT MBRF1060CT MBRF1080CT MBRF10100CT MBRF10150CT MBRF10200CT MBRF1620CT MBRF1630CT MBRF1640CT MBRF1645CT MBRF1650CT MBRF1660CT MBRF1680CT MBRF16100CT MBRF16150CT MBRF16200CT MBRF2020CT MBRF2030CT MBRF2040CT MBRF2045CT MBRF2050CT MBRF2060CT MBRF2080CT MBRF20100CT MBRF20150CT MBRF20200CT</p>
---------	--



This document is issued by the Company subject to its General Conditions of Service printed overleaf, available on request or accessible at <http://www.sgs.com/en/Terms-and-Conditions.aspx> and, for electronic format documents, subject to Terms and Conditions for Electronic Documents at <http://www.sgs.com/en/Terms-and-Conditions/Terms-e-Documents.aspx>. Attention is drawn to the limitation of liability, indemnification and jurisdiction issues defined therein. Any holder of this document is advised that information contained hereon reflects the Company's findings at the time of its intervention only and within the limits of Client's instructions, if any. The Company's sole responsibility is to its Client and this document does not exonerate parties to a transaction from exercising all their rights and obligations under the transaction documents. This document cannot be reproduced except in full, without prior written approval of the Company. Any unauthorized alteration, forgery or falsification of the content or appearance of this document is unlawful and offenders may be prosecuted to the fullest extent of the law. Unless otherwise stated the results shown in this test report refer only to the sample(s) tested.

Attention: To check the authenticity of testing /inspection report & certificate, please contact us at telephone: (86-755) 8307 1443, or email: CN.Doccheck@sgs.com

198 Kezhu Road, Sciencetech Park Guangzhou Economic & Technology Development District, Guangzhou, China 510663 t (86-20) 82155555 f (86-20) 82075113 www.sgs.com.cn
中国·广州·经济技术开发区科学城科珠路198号 邮编: 510663 t (86-20) 82155555 f (86-20) 82075113 e sgs.china@sgs.com

TO-247/TO-3P	SR3020PT SR3030PT SR3040PT SR3045PT SR3050PT SR3060PT SR3080PT SR30100PT SR30150PT SR30200PT SF301C SF302C SF303C SF304C SF305C SF306C SF307C SF308C MBR3020PT MBR3030PT MBR3040PT MBR3045PT MBR3050PT MBR3060PT MBR3080PT MBR30100PT MBR30150PT MBR30200PT
SS	SS120 SS130 SS140 SS150 SS160 SS180 SS190 SS1100 SS1150 SS1200 SS220 SS230 SS240 SS250 SS260 SS280 SS290 SS2100 SS2150 SS2200 SSU11 SSU12 SSU13 SSU14 SSU15 SSU16 SSU17 SSU18 SSH101 SSH102 88H103 SSH104 SSH105 SSH106 SSH107 SSH108 SSF101 SSF102SSF103 SSF103 SSF105 SSF106 SSF107 SS4001 SS4002 SS4003 SS4004 SS4005 SS4006 SS4007
DO-213AA	LM4001G LM4002G LM4003G LM4004G LM4005G LM4006G LM4007G LM101G LM102G LM103G LM104G LM105G LM106G LM107G LM5817G LM5818G LM5819G
SM-1/DO-213AB	SM120 SM130 SM140 SM150 SM160 SM180 SM1100 SMF101 SMF102 SMF103 SMF104SMF105 SMF106 SMF107 SM4001 SM4002 SM4003 SM4004 SM4005 SM4006 SM4007 DL4001 DL4002 DL4003 DL4004 DL4005 DL4006 DL4007 SM4933 SM4934 SM4935 SM4936 SM4937 SMU4001 SMU4002 SMU4003 SMU4004 SMU4005 SMU4006 SMU4007 SM5817 SM5818 SM5819



This document is issued by the Company subject to its General Conditions of Service printed overleaf, available on request or accessible at <http://www.sgs.com/en/Terms-and-Conditions.aspx> and, for electronic format documents, subject to Terms and Conditions for Electronic Documents at <http://www.sgs.com/en/Terms-and-Conditions/Terms-e-Documents.aspx>. Attention is drawn to the limitation of liability, indemnification and jurisdiction issues defined therein. Any holder of this document is advised that information contained hereon reflects the Company's findings at the time of its intervention only and within the limits of Client's instructions, if any. The Company's sole responsibility is to its Client and this document does not exonerate parties to a transaction from exercising all their rights and obligations under the transaction documents. This document cannot be reproduced except in full, without prior written approval of the Company. Any unauthorized alteration, forgery or falsification of the content or appearance of this document is unlawful and offenders may be prosecuted to the fullest extent of the law. Unless otherwise stated the results shown in this test report refer only to the sample(s) tested.

Attention: To check the authenticity of testing /inspection report & certificate, please contact us at telephone: (86-755) 8307 1443, or email: CN.Doccheck@sgs.com

SMA	<p>SM5817A SM5818A SM5819A SM120A SM130A SM140A SM150A SM160A SM180A SM190A SM1100A SM1150A SM1 200A SM220A SM230A SM240A SM250A SIVQ60A SM280A SM290A SM21 00A SM21 50A SM2200A SM320A SM330A SM340A SM350A SM360A SM380A SM390A SM31 00A SM31 50A SM3200A SM520A SM530A SM540A SM550A SM560A SM580A SM590A SM51 00A SM51 50A SM5200A SMU11A SMU12A SMU13A SMU14A SMU15A SMU16A SMU17A SMU18A SMU21A SMU22A SMU23A SMU24A SMU25A SMU26A SMU27A SMU28A SMH101A SMH102A SMH103A SMH104A SMH105A SMH106A SMH107A SMH108A SMH201A SMH202A SMH203A SMH204A SMH205A SMH206A SMH207A SMH208A SMF101A SMF102A SMF103A SMF104A SMF105A SMF106A SMF107A SM4933A SM4934A SM4935A SM4936A SM4937A SM4001A SM4002A SM4003A SM4004A SM4005A SM4006A SM4007A M1 M2 M3 M4 M5 M6 M7 S1A S1B S1D S1G S1J S1K S1M GS1A GS1B GS1D GS1G GS1J GS1K GS1M RS1A RS1B RS1D RS1G RS1J RS1K RS1M US1A US1B US1D US1G US1J US1K US1M ES1A ES1B ES1D ES1G ES1J ES1K ES1M SS12 SS13 SS14 SS15 SS16 SS18 SS110 SS115 SS120 SS22 SS23 SS24 SS25 SS26 SS28 SS210 SS215 SS220 SS32 SS33 SS34 SS35 SS36 SS38 SS310 SS315 SS320 SS52 SS53 SS54 SS55 SS56 SS58 SS510 SS515 SS520 SK12 SK13 SK14 SK15 SK16 SK18 SK110 SK115 SK120 SK22 SK23 SK24 SK25 SK26 SK28 SK210 SK215 SK220 SK32 SK33 SK34 SK35 SK36 SK38 SK310 SK315 SK320 SK52 SK53 SK54 SK55 SK56 SK58 SK510 SK515 SK520 S2A S2B S2D S2G S2J S2K S2M GS2A GS2B GS2D GS2G GS2J GS2K GS2M RS2A RS2B RS2D RS2G RS2J RS2K RS2M US2A US2B US2D US2G US2J US2K US2M ES2A ES2B ES2D ES2G ES2J ES2K ES2M</p>
-----	--



This document is issued by the Company subject to its General Conditions of Service printed overleaf, available on request or accessible at <http://www.sgs.com/en/Terms-and-Conditions.aspx> and, for electronic format documents, subject to Terms and Conditions for Electronic Documents at <http://www.sgs.com/en/Terms-and-Conditions/Terms-e-Document.aspx>. Attention is drawn to the limitation of liability, indemnification and jurisdiction issues defined therein. Any holder of this document is advised that information contained hereon reflects the Company's findings at the time of its intervention only and within the limits of Client's instructions, if any. The Company's sole responsibility is to its Client and this document does not exonerate parties to a transaction from exercising all their rights and obligations under the transaction documents. This document cannot be reproduced except in full, without prior written approval of the Company. Any unauthorized alteration, forgery or falsification of the content or appearance of this document is unlawful and offenders may be prosecuted to the fullest extent of the law. Unless otherwise stated the results shown in this test report refer only to the sample(s) tested.

Attention: To check the authenticity of testing /inspection report & certificate, please contact us at telephone: (86-755) 8307 1443, or email: CN.Doccheck@sgs.com

SOD-123FL	<p>SM120M SM130M SM140M SM150M SM160M SM180M SM190M SM1100M SMU11M SMU12M SMU13M SMU14M SMU15M SMU16M SMU17M SMU18M SMH101M SMH102M SMH103M SMH104M SMH105M SMH106M SMH107M SMH108M SMF101M SMF102M SMF103M SMF104M SMF105M SMF106M SMF107M DSR1A DSR1B DSR1D DSR1G DSR1J DSR1K DSR1M DFR1A DFR1B DFR1D DFR1G DFR1J DFR1K DFR1M RS07A RS07B RS07D RS07G RS07J RS07K RS07M DUF1A DUF1B DUF1D DUF1G DUF1J DUF1K DUF1M DSF1A DSF1B DSF1D DSF1G DSF1J DSF1K DSF1M B5817W B5818W B5819W S1TA1 A2 A3 A4 A5 A6 A7 D1 D2 D3 D4 D5 D6 D7 T1 T2 T3 T4 T5 T6 T7 S1A S1B S1D S1G S1J S1K S1M F1 F2 F3 F4 F5 F6 F7 F1A F1B F1D F1G F1J F1K F1M U1A U1B U1D U1G U1J U1K U1M E1A E1B E1D E1G E1J E1K E1M K2 K3 K4 K12 K13 K14 K15 K16 K18 K10 K22 K23 K24 K25 K26 K28 K210 K32 K33 K34 K35 K36 K38 K310 GP GQ GR SS1020FL SS1030FL SS1040FL SS1060FL SS1080FL SS10100FL SS2020FL SS2030FL SS2040FL SS2060FL SS2080FL SS20100FL SS3020FL SS3030FL SS3040FL SS3060FL SS3080FL SS30100FL SS5020FL SS5030FL SS5040FL SS5060FL SS5080FL SS50100FL SMF6.8~440A(AC)</p>
-----------	---



This document is issued by the Company subject to its General Conditions of Service printed overleaf, available on request or accessible at <http://www.sgs.com/en/Terms-and-Conditions.aspx> and, for electronic format documents, subject to Terms and Conditions for Electronic Documents at <http://www.sgs.com/en/Terms-and-Conditions/Terms-e-Documents.aspx>. Attention is drawn to the limitation of liability, indemnification and jurisdiction issues defined therein. Any holder of this document is advised that information contained hereon reflects the Company's findings at the time of its intervention only and within the limits of Client's instructions, if any. The Company's sole responsibility is to its Client and this document does not exonerate parties to a transaction from exercising all their rights and obligations under the transaction documents. This document cannot be reproduced except in full, without prior written approval of the Company. Any unauthorized alteration, forgery or falsification of the content or appearance of this document is unlawful and offenders may be prosecuted to the fullest extent of the law. Unless otherwise stated the results shown in this test report refer only to the sample(s) tested.

Attention: To check the authenticity of testing /inspection report & certificate, please contact us at telephone: (86-755) 8307 1443, or email: CN.Doccheck@sgs.com

SMB	<p>SM220B SM230B SM240B SM250B SM260B SM280B SM290B SM2100B SM2150B SM2200B SM5820B SM5821B SM5822B SM320B SM330B SM340B SM350B SM360B SM380B SM390B SM3100B SM3150B SM3200B SM520B SM530B SM540B SM550B SM560B SM580B SM590B SM5100B SM5150B SM5200B SMU21B SMU22B SMU23B SMU24B SMU25B SMU26B SMU27B SMU28B SMU31B SMU32B SMU33B SMU34B SMU35B SMU36B SMU37B SMU38B SMH201B SMH202B SMH203B SMH204B SMH205B SMH206B SMH207B SMH208B SMH301B SMH302B SMH303B SMH304B SMH305B SMH306B SMH307B SMH308B SMF201B SMF202B SMF203B SMF204B SMF205B SMF206B SMF207B SMF301B SMF302B SMF303B SMF304B SMF305B SMF306B SMF307B SS22 SS23 SS24 SS25 SS26 SS28 SS210 SS215 SS220SS32 SS33 SS34 SS35 SS36 SS38 SS310 SS315 SS320 SS52 SS53 SS54 SS55 SS56 SS58 SS510 SS515 SS520 SK22 SK23 SK24 SK25 SK26 SK28 SK210 SK215 SK220 SK32 SK33 SK34 SK35 SK36 SK38 SK310 SK315 SK320 SK52 SK53 SK54 SK55 SK56 SK58 SK510 SK515 SK520 S2A S2B S2D S2G S2J S2K S2M GS2A GS2B GS2D GS2G GS2J GS2K GS2M RS2A RS2B RS2D RS2G RS2J RS2K RS2M US2A US2B US2D US2G US2J US2K US2M ES2A ES2B ES2D ES2G ES2J ES2K ES2M S3A S3B S3D S3G S3J S3K S3M GS3A GS3B GS3D GS3G GS3J GS3K GS3M RS3A RS3B RS3D RS3G RS3J RS3K RS3M US3A US3B US3D US3G US3J US3K US3M ES3A ES3B ES3D ES3G ES3J ES3K ES3M</p>
-----	---



This document is issued by the Company subject to its General Conditions of Service printed overleaf, available on request or accessible at <http://www.sgs.com/en/Terms-and-Conditions.aspx> and, for electronic format documents, subject to Terms and Conditions for Electronic Documents at <http://www.sgs.com/en/Terms-and-Conditions/Terms-e-Documents.aspx>. Attention is drawn to the limitation of liability, indemnification and jurisdiction issues defined therein. Any holder of this document is advised that information contained hereon reflects the Company's findings at the time of its intervention only and within the limits of Client's instructions, if any. The Company's sole responsibility is to its Client and this document does not exonerate parties to a transaction from exercising all their rights and obligations under the transaction documents. This document cannot be reproduced except in full, without prior written approval of the Company. Any unauthorized alteration, forgery or falsification of the content or appearance of this document is unlawful and offenders may be prosecuted to the fullest extent of the law. Unless otherwise stated the results shown in this test report refer only to the sample(s) tested.

Attention: To check the authenticity of testing /inspection report & certificate, please contact us at telephone: (86-755) 8307 1443, or email: CN.Doccheck@sgs.com

198 Kezhu Road, Sciencetech Park Guangzhou Economic & Technology Development District, Guangzhou, China 510663 t (86-20) 82155555 f (86-20) 82075113 www.sgsgroup.com.cn
中国·广州·经济技术开发区科学城科珠路198号 邮编: 510663 t (86-20) 82155555 f (86-20) 82075113 e sgs.china@sgs.com

SMC	SM320C SM330C SM340C SM350C SM360C SM380C SM390C SM3100C SM3150C SM3200C SM520C SM530C SM540C SM550C SM560C SM580C SM590C SM5100C SM5150C SM5200C SMU31C SMU32C SMU33C SMU34C SMU35C SMU36C SMU37C SMU38C SMU51C SMU52C SMU53C SMU54C SMU55C SMU56C SMU57C SMU58C SMH301C SMH302C SMH303C SMH304C SMH305C SMH306C SMH307C SMH308C SMF301C SMF302C SMF303C SMF304C SMF305C SMF306C SMF307C S3A S3B S3D S36 S3J S3K S3M S5A S5B S5D S56 S5J S5K S5M GS3A GS3B GS3D GS3G GS3J GS3K GS3M GS5A GS5B GS5D GS5G GS5J GS5K GS5M RS3A RS3B RS3D RS3G RS3J RS3K RS3M RS5A RS5B RS5D RS5G RS5J RS5K RS5M US3A US3B US3D US3G US3J US3K US3M US5A US5B US5D US5G US5J US5K US5M ES3A ES3B ES3D ES3G ES3J ES3K ES3M ES5A ES5B ES5D ES5G ES5J ES5K ES5M SS32 SS33 SS34 SS35 SS36 SS38 SS310 SS315 SS320 SS52 SS53 SS54 SS55 SS56 SS58 SS510 SS515 SS520 SK32 SK33 SK34 SK35 SK36 SK38 SK310 SK315 SK320 SK52 SK53 SK54 SK55 SK56 SK58 SK510 SK515 SK520 SK82 SK83 SK84 SK85 SK86 SK88 SK810 SK815 SK820
MDS	MD1S MD2S MD3SS MD4S MD5S MD6S MD7S MB1S MB2S MB4S MB5S MB6S MB8S MB10S
DB-1	DB101 DB102 DB103 DB104 DB105 DB106 DB107 DB151 DB152 DB153 DB154 DB155 DB156 DB157 DB201 DB202 DB203 DB204 DB205 DB206 DB207
DB-1S	DB101S DB102S DB103S DB104S DB105S DB106S DB107S DB151S DB152S DB153S DB154S DB155S DB156S DB157S DB201S DB202S DB203S DB204S DB205S DB206S DB207S



This document is issued by the Company subject to its General Conditions of Service printed overleaf, available on request or accessible at <http://www.sgs.com/en/Terms-and-Conditions.aspx> and, for electronic format documents, subject to Terms and Conditions for Electronic Documents at <http://www.sgs.com/en/Terms-and-Conditions/Terms-e-Documents.aspx>. Attention is drawn to the limitation of liability, indemnification and jurisdiction issues defined therein. Any holder of this document is advised that information contained hereon reflects the Company's findings at the time of its intervention only and within the limits of Client's instructions, if any. The Company's sole responsibility is to its Client and this document does not exonerate parties to a transaction from exercising all their rights and obligations under the transaction documents. This document cannot be reproduced except in full, without prior written approval of the Company. Any unauthorized alteration, forgery or falsification of the content or appearance of this document is unlawful and offenders may be prosecuted to the fullest extent of the law. Unless otherwise stated the results shown in this test report refer only to the sample(s) tested.

Attention: To check the authenticity of testing / inspection report & certificate, please contact us at telephone: (86-755) 8307 1443, or email: CN.Doccheck@sgs.com

198 Kezhu Road, Sciencetech Park Guangzhou Economic & Technology Development District, Guangzhou, China 510663 t (86-20) 82155555 f (86-20) 82075113 www.sgsgroup.com.cn
中国·广州·经济技术开发区科学城科珠路198号 邮编: 510663 t (86-20) 82155555 f (86-20) 82075113 e sgs.china@sgs.com

DFS	DF005S DF01S DF02S DF04S DF06S DF08S DF10S
RS-1	RS101 RS102 RS103 RS104 RS105 RS106 RS107
RB-15	RB151 RB152 RB153 RB154 RB155 RB156 RB157
WOM	W005M W01M W02M W04M W06M W08M W10M W005 W01 W02 W04 W06 W08 W10
WOL	2W005 2W01 2W02 2W04 2W06 2W08 2W10
WOM-S	W005S W01S W02S W04S W06S W08S W10S
RS-2	RS201 RS202 RS203 RS204 RS205 RS206 RS207
KBP	KBP2005 KBP201 KBP202 KBP204 KBP206 KBP208 KBP210 KBP201 KBP202 KBP203 KBP204 KBP205 KBP206 KBP207 KBP3005 KBP301 KBP302 KBP304 KBP306 KBP308 KBP310 KBP301 KBP302 KBP303 KBP304 KBP305 KBP306 KBP307
RS-2M	RS201M RS202M RS203M RS204M RS205M RS206M RS207M
BR-3	BR305 BR31 BR32 BR34 BR36 BR38 BR310
RS-4L	RS401L RS402L RS403L RS404L RS405L RS406L RS407L
KBL	KBL401 KBL402 KBL403 KBL404 KBL405 KBL406 KBL407 KBL005 KBL01 KBL02 KBL04 KBL06 KBL08 KBL10 KBL6005 KBL601 KBL602 KBL604 KBL606 KBL608 KBL610
KBJ	KBJ401 KBJ402 KBJ403 KBJ404 KBJ405 KBJ406 KBJ407 KBJ601 KBJ602 KBJ603 KBJ604 KBJ605 KBJ606 KBJ607 KBJ801 KBJ802 KBJ803 KBJ804 KBJ805 KBJ806 KBJ807 KBJ1001 KBJ1002 KBJ1003 KBJ1004 KBJ1005 KBJ1006 KBJ1007 KBJ1501 KBJ1502 KBJ1503 KBJ1504 KBJ1505 KBJ1506 KBJ1507 KBJ2001 KBJ2002 KBJ2003 KBJ2004 KBJ2005 KBJ2006 KBJ2007



This document is issued by the Company subject to its General Conditions of Service printed overleaf, available on request or accessible at <http://www.sgs.com/en/Terms-and-Conditions.aspx> and, for electronic format documents, subject to Terms and Conditions for Electronic Documents at <http://www.sgs.com/en/Terms-and-Conditions/Terms-e-Documents.aspx>. Attention is drawn to the limitation of liability, indemnification and jurisdiction issues defined therein. Any holder of this document is advised that information contained hereon reflects the Company's findings at the time of its intervention only and within the limits of Client's instructions, if any. The Company's sole responsibility is to its Client and this document does not exonerate parties to a transaction from exercising all their rights and obligations under the transaction documents. This document cannot be reproduced except in full, without prior written approval of the Company. Any unauthorized alteration, forgery or falsification of the content or appearance of this document is unlawful and offenders may be prosecuted to the fullest extent of the law. Unless otherwise stated the results shown in this test report refer only to the sample(s) tested.

Attention: To check the authenticity of testing / inspection report & certificate, please contact us at telephone: (86-755) 8307 1443, or email: CN.Doccheck@sgs.com

KBU	KBU401 KBU402 KBU403 KBU404 KBU405 KBU406 KBU407 KBU601 KBU602 KBU603 KBU604 KBU605 KBU606 KBU607 KBU801 KBU802 KBU803 KBU804 KBU805 KBU806 KBU807 KBU1001 KBU1002 KBU1003 KBU1004 KBU1005 KBU1006 KBU1007 RS801 RS802 RS803 RS804 RS805 RS806 RS807
GBU	GBU401 GBU402 GBU403 GBU404 GBU405 GBU406 GBU407 GBU601 GBU602 GBU603 GBU604 GBU605 GBU606 GBU607 GBU801 GBU802 GBU803 GBU804 GBU805 GBU806 GBU807 GBU1001 GBU1002 GBU1003 GBU1004 GBU1005 GBU1006 GBU1007 GBU1501 GBU1502 GBU1503 GBU1504 GBU1505 GBU1506 GBU1507
GBL	GBL201 GBL202 GBL203 GBL204 GBL205 GBL206 GBL207 GBL401 GBL402 GBL403 GBL404 GBL405 GBL406 GBL407
GBJ	GBJ401 GBJ402 GBJ403 GBJ404 GBJ405 GBJ406 GBJ407 GBJ601 GBJ602 GBJ603 GBJ604 GBJ605 GBJ606 GBJ607 GBJ801 GBJ802 GBJ803 GBJ804 GBJ805 GBJ806 GBJ807 GBJ1001 GBJ1002 GBJ1003 GBJ1004 GBJ1005 GBJ1006 GBJ1007 GBJ1501 GBJ1502 GBJ1503 GBJ1504 GBJ1505 GBJ1506 GBJ1 507 GBJ2001 GBJ2002 GBJ2003 GBJ2004 GBJ2005 GBJ2006 GBJ2007 GBJ2501 GBJ2502 GBJ2503 GBJ2504 GBJ2505 GBJ2506 GBJ2507



This document is issued by the Company subject to its General Conditions of Service printed overleaf, available on request or accessible at <http://www.sgs.com/en/Terms-and-Conditions.aspx> and, for electronic format documents, subject to Terms and Conditions for Electronic Documents at <http://www.sgs.com/en/Terms-and-Conditions/Terms-e-Documents.aspx>. Attention is drawn to the limitation of liability, indemnification and jurisdiction issues defined therein. Any holder of this document is advised that information contained hereon reflects the Company's findings at the time of its intervention only and within the limits of Client's instructions, if any. The Company's sole responsibility is to its Client and this document does not exonerate parties to a transaction from exercising all their rights and obligations under the transaction documents. This document cannot be reproduced except in full, without prior written approval of the Company. Any unauthorized alteration, forgery or falsification of the content or appearance of this document is unlawful and offenders may be prosecuted to the fullest extent of the law. Unless otherwise stated the results shown in this test report refer only to the sample(s) tested.

Attention: To check the authenticity of testing /inspection report & certificate, please contact us at telephone: (86-755) 8307 1443, or email: CN.Doccheck@sgs.com

KBPC	KBPC6005 KBPC601 KBPC602 KBPC604 KBPC606 KBPC608 KBPC610 KBPC8005 KBPC801 KBPC802 KBPC804 KBPC806 KBPC808 KBPC810 KBPC1005 KBPC1001 KBPC1002 KBPC1004 KBPC1006 KBPC1008 KBPC1010 KBPC1505 KBPC1501 KBPC1502 KBPC1504 KBPC1506 KBPC1508 KBPC1510 KBPC2005 KBPC2001 KBPC2002 KBPC2004 KBPC2006 KBPC2008 KBPC2010 KBPC2505 KBPC2501 KBPC2502 KBPC2504 KBPC2506 KBPC2508 KBPC2510 KBPC3505 KBPC3501 KBPC3502 KBPC3504 KBPC3506 KBPC3508 KBPC3510 KBPC5005 KBPC5001 KBPC5002 KBPC5004 KBPC5006 KBPC5008 KBPC5010
BR-6	BR605 BR61 BR62 BR64 BR66 BR68 BR610
BR-8	BR805 BR81 BR82 BR84 BR86 B R88 BR810
BR-10	BR1005 BR101 BR102 BR104 BR106 BR108 BR1010
MB	MB1505 MB151 MB152 MB154 MB156 MB158 MB1510 MB2505 MB251 M8252 MB254 MB256 MB258 MB2510 MB3505 MB351 MB352 MB354 MB356 MB358 MB3510
MB-W	MB1505W MB151W MB152W MB154W MB156W MB158W MB1510W MB2505W MB251W MB252W MB254W MB256W MB258W MB2510W MB3505W MB351W MB352W MB354W MB356W MB358W MB3510W
MP	MP1505 MP151 MP152 MP154 MP156 MP158 MP1510 MP2505 MP251 MP252 MP254 MP256 MP258 MP2510 MP3505 MP351 MP352 MP354 MP356 MP358 MP3510



This document is issued by the Company subject to its General Conditions of Service printed overleaf, available on request or accessible at <http://www.sgs.com/en/Terms-and-Conditions.aspx> and, for electronic format documents, subject to Terms and Conditions for Electronic Documents at <http://www.sgs.com/en/Terms-and-Conditions/Terms-e-Documents.aspx>. Attention is drawn to the limitation of liability, indemnification and jurisdiction issues defined therein. Any holder of this document is advised that information contained hereon reflects the Company's findings at the time of its intervention only and within the limits of Client's instructions, if any. The Company's sole responsibility is to its Client and this document does not exonerate parties to a transaction from exercising all their rights and obligations under the transaction documents. This document cannot be reproduced except in full, without prior written approval of the Company. Any unauthorized alteration, forgery or falsification of the content or appearance of this document is unlawful and offenders may be prosecuted to the fullest extent of the law. Unless otherwise stated the results shown in this test report refer only to the sample(s) tested.

Attention: To check the authenticity of testing /inspection report & certificate, please contact us at telephone: (86-755) 8307 1443, or email: CN.Doccheck@sgs.com

MP-W	MP1505W MP151W MP152W MP154W MP156W MP158W MP1510W MP2505W MP251W MP252W MP254W MP256W MP258W MP2510W MP3505W MP351W MP352W MP354W MP356W MP358W MP3510W
AR	AR2505 AR251 AR252 AR254 AR256 AR258 AR2510 AR3505 AR351 AR352 AR354 AR356 AR358 AR3510
ABS	AB1S AB2S AB3S AB4S AB5S AB6S AB7S ABS05 ABS1 ABS2 ABS4 ABS6 ABS8 ABS10 TB1S TS2S TB3S TB4S TB5S TB6S TB7S TB05S TB1S TB2S TB4S TB6S TB8S TB10S
ADS	AD1S AD2S AD3S AD4S AD5S AD6S AD7S
MBF	MB05F MB1F MB2F MB4F MB6F MB8F MB10F MBF12 MBF13 MBF14 MBF15 MBF16 MBF18 MBF110
MBM	MB05M MB1M MB2M MB4M MB6M MB8M MB10M
LBS	LB05S LB1S LB2S LB4S LB6S LB8S LB10S
ABF	DBS05 DBS1 DBS2 DBS4 DBS6 DBS8 DBS10
TO-277	SB1020L SB1040L SB1045L SB1060L SB1080L SB10100L SB10120L SB10150L SB10200L SB1520L SB1540L SB1545L SB1560L SB1580L SB15100L SB15120L SB15150L SB15200L SB2020L SB2040L SB2045L SB2060L SB2080L SB20100L SB20120L SB20150L SB20200L
SOD323	SM5819WS



This document is issued by the Company subject to its General Conditions of Service printed overleaf, available on request or accessible at <http://www.sgs.com/en/Terms-and-Conditions.aspx> and, for electronic format documents, subject to Terms and Conditions for Electronic Documents at <http://www.sgs.com/en/Terms-and-Conditions/Terms-e-Documents.aspx>. Attention is drawn to the limitation of liability, indemnification and jurisdiction issues defined therein. Any holder of this document is advised that information contained hereon reflects the Company's findings at the time of its intervention only and within the limits of Client's instructions, if any. The Company's sole responsibility is to its Client and this document does not exonerate parties to a transaction from exercising all their rights and obligations under the transaction documents. This document cannot be reproduced except in full, without prior written approval of the Company. Any unauthorized alteration, forgery or falsification of the content or appearance of this document is unlawful and offenders may be prosecuted to the fullest extent of the law. Unless otherwise stated the results shown in this test report refer only to the sample(s) tested.

Attention: To check the authenticity of testing /inspection report & certificate, please contact us at telephone: (86-755) 8307 1443, or email: CN.Doccheck@sgs.com

SMAF	<p>M1F M2F M3F M4F M5F M6F M7F S1AF S1BF S1DF S1GF S1JF S1KF S1MF GS1AF GS1BF GS1DF GS1GF GS1JF GS1KF GS1MF RS1AF RS1BF RS1DF RS1GF RS1JF RS1KF RS1MF US1AF US1BF US1DF US1GF US1JF US1KF US1MF ES1AF ES1BF ES1DF ES1GF ES1JF ES1KF ES1MF SS12F SS13F SS14F SS15F SS16F SS18F SS110F SS115F SS120F SS22F SS23F SS24F SS25F SS26F SS28F SS210F SS215F SS220F SS32F SS33F SS34F SS35F SS36F SS38F SS310F SS315F SS320F SS52F SS53F SS54F SS55F SS56F SS58F SS510F SS515F SS520F SK12F SK13F SK14F SK15F SK16F SK18F SK110F SK115F SK120F SK22F SK23F SK24F SK25F SK26F SK28F SK210F SK215F SK220F SK32F SK33F SK34F SK35F SK36F SK38F SK310F SK315F SK320F SK52F SK53F SK54F SK55F SK56F SK58F SK510F SK515F SK520F S2AF S2BF S2DF S2GF S2JF S2KF S2MF GS2AF GS2BF GS2DF GS2GF GS2JF GS2KF GS2MF RS2AF RS2BF RS2DF RS2GF RS2JF RS2KF RS2MF US2AF US2BF US2DF US2GF US2JF US2KF US2MF ES2AF ES2BF ES2DF ES2GF ES2JF ES2KF ES2MF</p>
------	--



This document is issued by the Company subject to its General Conditions of Service printed overleaf, available on request or accessible at <http://www.sgs.com/en/Terms-and-Conditions.aspx> and, for electronic format documents, subject to Terms and Conditions for Electronic Documents at <http://www.sgs.com/en/Terms-and-Conditions/Terms-e-Documents.aspx>. Attention is drawn to the limitation of liability, indemnification and jurisdiction issues defined therein. Any holder of this document is advised that information contained hereon reflects the Company's findings at the time of its intervention only and within the limits of Client's instructions, if any. The Company's sole responsibility is to its Client and this document does not exonerate parties to a transaction from exercising all their rights and obligations under the transaction documents. This document cannot be reproduced except in full, without prior written approval of the Company. Any unauthorized alteration, forgery or falsification of the content or appearance of this document is unlawful and offenders may be prosecuted to the fullest extent of the law. Unless otherwise stated the results shown in this test report refer only to the sample(s) tested.

Attention: To check the authenticity of testing /inspection report & certificate, please contact us at telephone: (86-755) 8307 1443, or email: CN.Doccheck@sgs.com

SMBF	SS22F SS23F SS24F SS25F SS26F SS28F SS210F SS215F SS220F SS32F SS33F SS34F SS35F SS36F SS38F SS310F SS315F SS320F SS52F SS53F SS54F SS55F SS56F SS58F SS510F SS515F SS520F SK22F SK23F SK24F SK25F SK26F SK28F SK210F SK215F SK220F SK32F SK33F SK34F SK35F SK36F SK38F SK310F SK315F SK320F SK52F SK53F SK54F SK55F SK56F SK58F SK510F SK515F SK520F S2AF S2BF S2DF S2GF S2JF S2KF S2MF GS2AF GS2BF GS2DF GS2GF GS2JF GS2KF GS2MF RS2AF RS2BF RS2DF RS2GF RS2JF RS2KF RS2MF US2AF US2BF US2DF US2GF US2JF US2KF US2MF ES2AF ES2BF ES2DF ES2GF ES2JF ES2KF ES2MF S3AF S3BF S3DF S3GF S3JF S3KF S3MF GS3AF GS3BF GS3DF GS3GF GS3JF GS3KF GS3MF RS3AF RS3BF RS3DF RS3GF RS3JF RS3KF RS3MF US3AF US3BF US3DF US3GF US3JF US3KF US3MF ES3AF ES3BF ES3DF ES3GF ES3JF ES3KF ES3MF
LL-34	LL4148
SOD-123	1N4148W



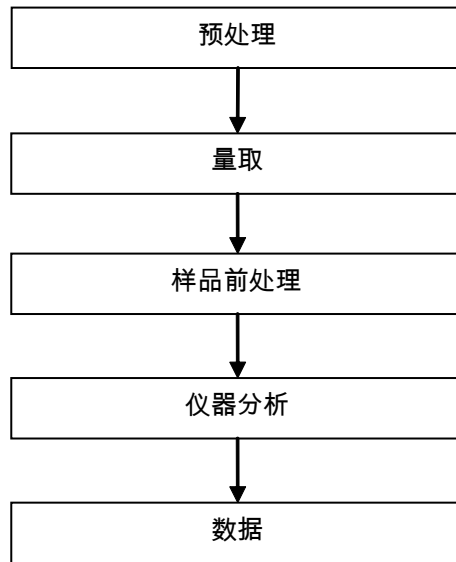
This document is issued by the Company subject to its General Conditions of Service printed overleaf, available on request or accessible at <http://www.sgs.com/en/Terms-and-Conditions.aspx> and, for electronic format documents, subject to Terms and Conditions for Electronic Documents at <http://www.sgs.com/en/Terms-and-Conditions/Terms-e-Documents.aspx>. Attention is drawn to the limitation of liability, indemnification and jurisdiction issues defined therein. Any holder of this document is advised that information contained hereon reflects the Company's findings at the time of its intervention only and within the limits of Client's instructions, if any. The Company's sole responsibility is to its Client and this document does not exonerate parties to a transaction from exercising all their rights and obligations under the transaction documents. This document cannot be reproduced except in full, without prior written approval of the Company. Any unauthorized alteration, forgery or falsification of the content or appearance of this document is unlawful and offenders may be prosecuted to the fullest extent of the law. Unless otherwise stated the results shown in this test report refer only to the sample(s) tested.

Attention: To check the authenticity of testing /inspection report & certificate, please contact us at telephone: (86-755) 8307 1443, or email: CN.Doccheck@sgs.com

附件

SVHC 测试流程图

- 1) 分析人员：何佳 / 张心颖
- 2) 项目负责人：余晓璐



This document is issued by the Company subject to its General Conditions of Service printed overleaf, available on request or accessible at <http://www.sgs.com/en/Terms-and-Conditions.aspx> and, for electronic format documents, subject to Terms and Conditions for Electronic Documents at <http://www.sgs.com/en/Terms-and-Conditions/Terms-e-Document.aspx>. Attention is drawn to the limitation of liability, indemnification and jurisdiction issues defined therein. Any holder of this document is advised that information contained hereon reflects the Company's findings at the time of its intervention only and within the limits of Client's instructions, if any. The Company's sole responsibility is to its Client and this document does not exonerate parties to a transaction from exercising all their rights and obligations under the transaction documents. This document cannot be reproduced except in full, without prior written approval of the Company. Any unauthorized alteration, forgery or falsification of the content or appearance of this document is unlawful and offenders may be prosecuted to the fullest extent of the law. Unless otherwise stated the results shown in this test report refer only to the sample(s) tested.

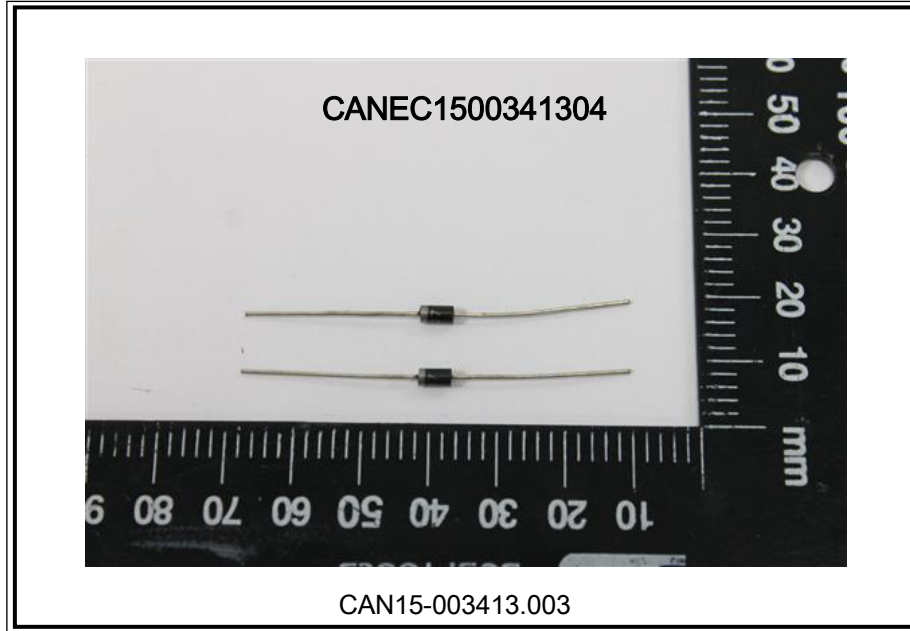
Attention: To check the authenticity of testing / inspection report & certificate, please contact us at telephone: (86-755) 8307 1443, or email: CN.Doccheck@sgs.com

测试报告 (SVHC)

No. CANEC1500341304

日期: 2015年01月16日 第33页,共33页

样品照片:



此照片仅限于随SGS正本报告使用

*** 报告完 ***